

Connect Temperature & Humidity Sensor (SHT31) for Wio Terminal device to your Azure IoT services

Table of Contents

- [Introduction](#)
- [Bill of Materials](#)
- [Supported Device Attestation Methods](#)
- [Prerequisites](#)
- [Prepare the Device](#)
- [Connect to Azure IoT](#)
- [Additional Links](#)

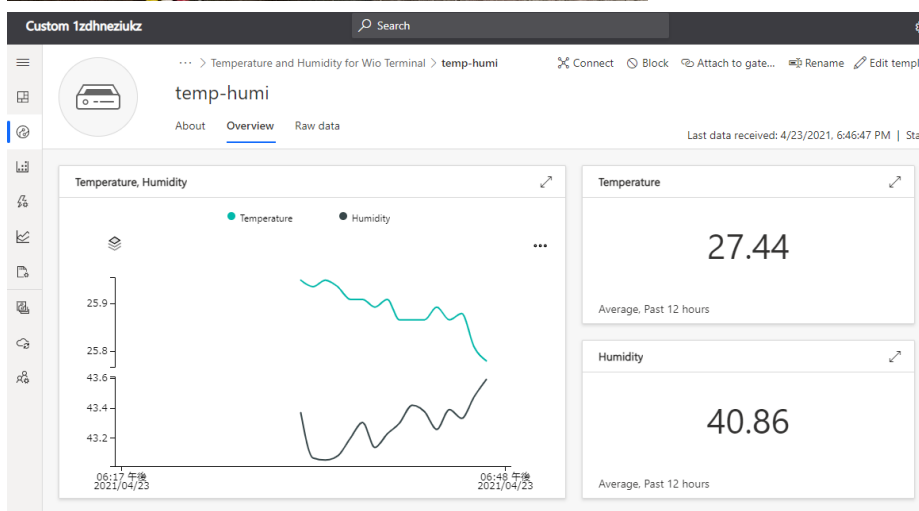
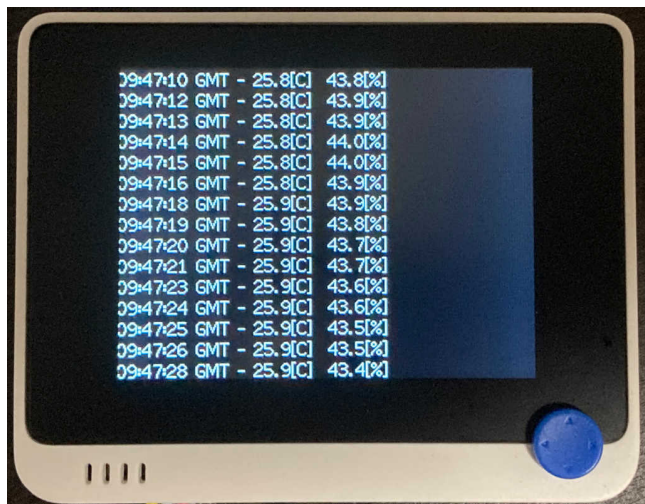
Introduction

This document describes how to connect Temperature & Humidity Sensor (SHT31) for Wio Terminal to Azure IoT Hub using the Azure IoT Explorer with certified device application and device models.

IoT Plug and Play certified device simplifies the process of building devices without custom device code. Using Solution builders can be integrated quickly using the certified IoT Plug and Play enabled device based on Azure IoT Central as well as third-party solutions.

This getting started guide provides step by step instruction on getting the device provisioned to Azure IoT Hub using Device Provisioning Service (DPS) and using Azure IoT Explorer to interact with device's capabilities.

The Temperature & Humidity Sensor (SHT31) for Wio Terminal is a device that periodically sends the temperature and humidity of the environment to Azure IoT.



Bill of Materials

Name	SKU#	Quantity	Wiki	Shop
Wio Terminal	102991299	1	here	here
Grove - Temperature & Humidity Sensor (SHT31)	101020212	1	here	here

Supported Device Attestation Methods

The following table summarizes supported device attestation/authentication methods :

Service	Enrollment	Authentication	Support status
Azure IoT Hub	-	Symmetric Key	Need recompile
Azure IoT Hub	-	X.509 Self-Signed	Not Supported
Azure IoT Hub	-	X.509 CA-Signed	Not Supported
Azure IoT Hub DPS	Group	Symmetric Key	Supported
Azure IoT Hub DPS	Group	CA Certificate	Not Supported

Service	Enrollment	Authentication	Support status
Azure IoT Hub DPS	Group	Intermediate Certificate	Not Supported
Azure IoT Hub DPS	Individual	Symmetric Key	Supported
Azure IoT Hub DPS	Individual	X.509	Not Supported
Azure IoT Hub DPS	Individual	TPM	Not Supported
Azure IoT Central	Group	Symmetric Key	Supported
Azure IoT Central	Group	CA Certificate	Not Supported

Prerequisites

You should have the following items ready before beginning the process:

For Azure IoT Central

- [Azure IoT Central application](#)

For Azure IoT Hub

- [Azure IoT Hub instance](#)
- [Azure IoT Hub Device Provisioning Service](#)

Prepare the Device

In order to configure WiFi and Azure IoT device authentication, please install a serial terminal application such as Putty. Wio Terminal uses a serial console command line tool to configure network and Azure IoT provisioning information.

[A game application](#) is pre-installed to Wio Terminal.

In order to connect to Azure IoT, please follow steps below :

1. Assemble
2. Update the Wi-Fi Firmware
3. Install Azure IoT Firmware
4. Boot Wio Terminal into the configuration mode
5. Configuring Wi-Fi
6. Reboot Wio Terminal

1. Assemble

Connect the Grove - Temperature & Humidity Sensor (SHT31) to the Wio Terminal with the Grove cable. The connection to the Wio Terminal is the left side Grove connector.



2. Update the Wi-Fi Firmware

Please follow instruction at [Wio Terminal's network overview page](#) to update the firmware.

You must use the version of Wi-Fi firmware specified in Azure IoT Firmware. See [the release page](#).

3. Install Azure IoT Firmware

1. Download the latest firmware **wioterminal-temp-humi-sht31.uf2** from [the release page](#)
2. Connect Wio Terminal to your PC
3. Slide the power switch twice quickly to enter bootloader mode ([Wio Terminal FAQ](#))
4. Confirm the Wio Terminal appears as a storage device in your PC as "Arduino"
5. Copy **wioterminal-temp-humi-sht31.uf2** to the **Arduino** drive

4. Boot Wio Terminal into the configuration mode

1. Turn on Wio Terminal while holding 3 buttons on the top of the device
2. Confirm LCD displays **In configuration mode**

5. Configuring Wi-Fi

1. Start the serial terminal application and configure the serial port number and baudrate
2. In the serial terminal application, type **help**

Output example:

```
# help
Configuration console:
- help: Help document.
- reset_factory_settings: Reset factory settings.
- show_settings: Display settings.
- set_wifissid: Set Wi-Fi SSID.
- set_wifipwd: Set Wi-Fi password.
- set_az_idscope: Set id scope of Azure IoT DPS.
- set_az_regid: Set registration id of Azure IoT DPS.
- set_az_symkey: Set symmetric key of Azure IoT DPS.
- set_az_iotc: Set connection information of Azure IoT Central.

#
```

3. Enter Wi-Fi SSID and password with `set_wifissid` and `set_wifipwd` commands

Output example:

```
# set_wifissid SSID
Set Wi-Fi SSID successfully.

# set_wifipwd PASSWORD
Set Wi-Fi password successfully.

#
```

6. Reboot Wio Terminal

Slide power switch to reset Wio Terminal.

Connect to Azure IoT

Depending on the authentication you would like to use, configure device authentication using `set_az*` command in the configuration mode.

For Azure IoT Central

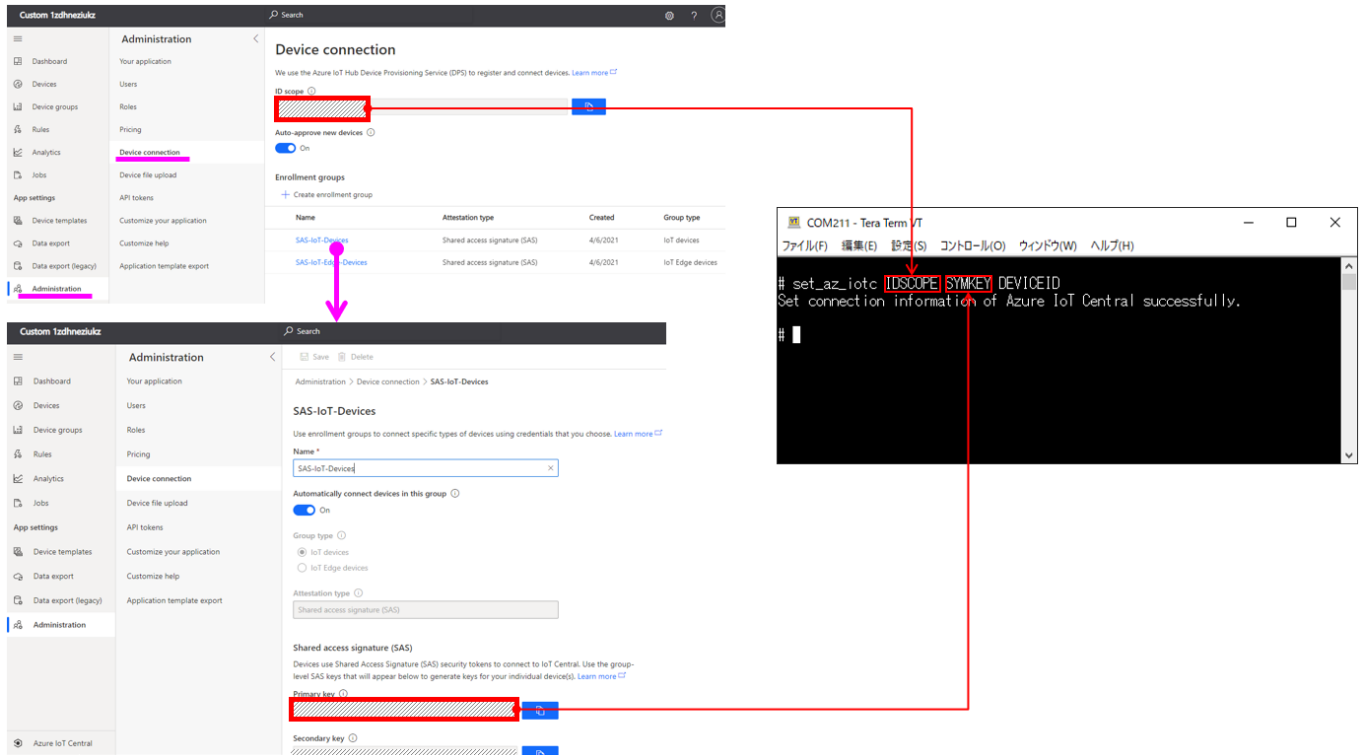
1. Booting into the configuration mode

1. Turn on Wio Terminal while holding 3 buttons on the top of the device
2. Confirm LCD displays `In configuration mode`

2. Execute `set_az_iotc` command

```
# set_az_iotc IDSCOPE SYMKEY DEVICEID
Set connection information of Azure IoT Central successfully.

#
```



3. Reboot Wio Terminal

Slide power switch to reset Wio Terminal.

For Azure IoT Hub DPS using individual enrollment

1. Booting into the configuration mode

1. Turn on Wio Terminal while holding 3 buttons on the top of the device
2. Confirm LCD displays **In configuration mode**

2. Execute set_az_iotc command

```
# set_az_idscope IDSCOPE
Set id scope successfully.

# set_az_regid REGID
Set registration id successfully.

# set_az_symkey SYMKEY
Set symmetric key successfully.

#
```

3. Reboot Wio Terminal

Slide power switch to reset Wio Terminal.

Additional Links

- [Source code \(on GitHub\)](#)

Please refer to the below link for additional information for Plug and Play

- [Manage cloud device messaging with Azure-IoT-Explorer](#)
- [Import the Plug and Play model](#)
- [Configure to connect to IoT Hub](#)
- [How to use IoT Explorer to interact with the device](#)